



**2012**



	.....	1
	.....	2
	.....	3
1	.....	3
2	.....	3
3	.....	4
	.....	4
1	.....	4
2	.....	5
	.....	5
1	.....	5
2	.....	6
3	.....	6
	.....	7
1	.....	7
2	.....	8
3	.....	9
4	.....	9
5	.....	10
	.....	10
1	.....	11
2	.....	11
3	.....	12
4	.....	13
5	.....	13
6	.....	14
	.....	16

---

1	.....	16
2	.....	17
	.....	19
1	.....	19
2	.....	19
3	.....	20
4	.....	20
	.....	21
1	.....	21
2	.....	21
3	.....	21
4	.....	24
5	.....	24
	.....	25
1	.....	25
2	.....	26
3	.....	26
4	.....	26
5	.....	26



2012

2013

2013

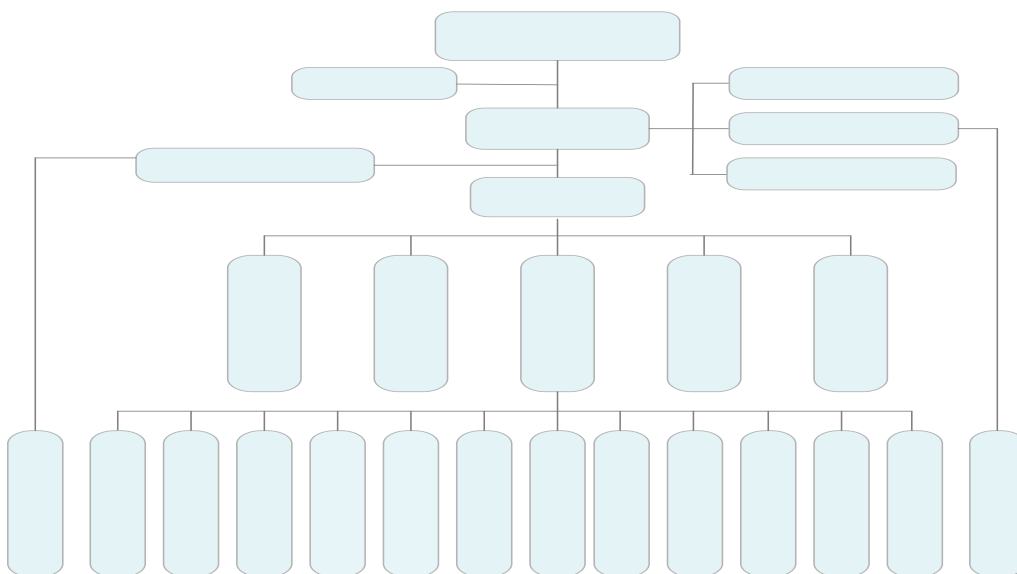
2013

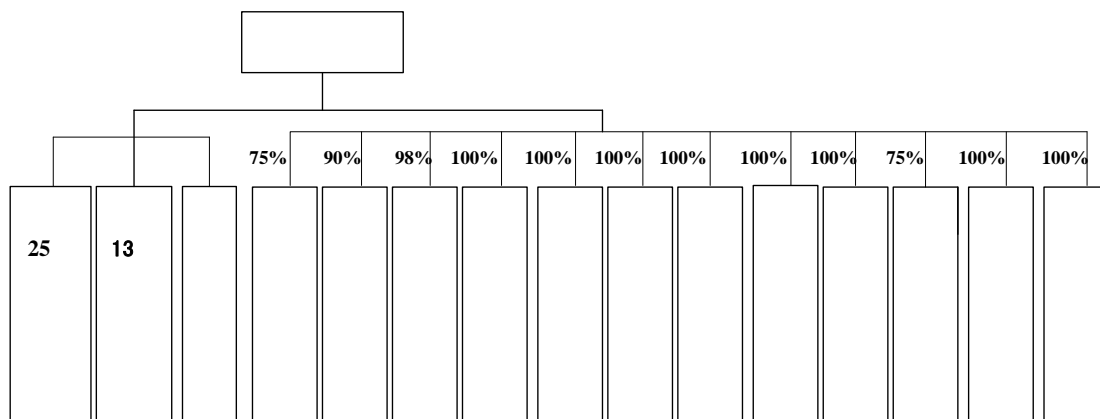
2013 4 24

1

2005 3 29  
2011 1 7  
601118  
39.31  
353 25  
13 1 12  
2012

2





**3**

25%

353

**1**

1/3

2007 2

2015

60

353

4

34

2

3

2012

2012

1

353

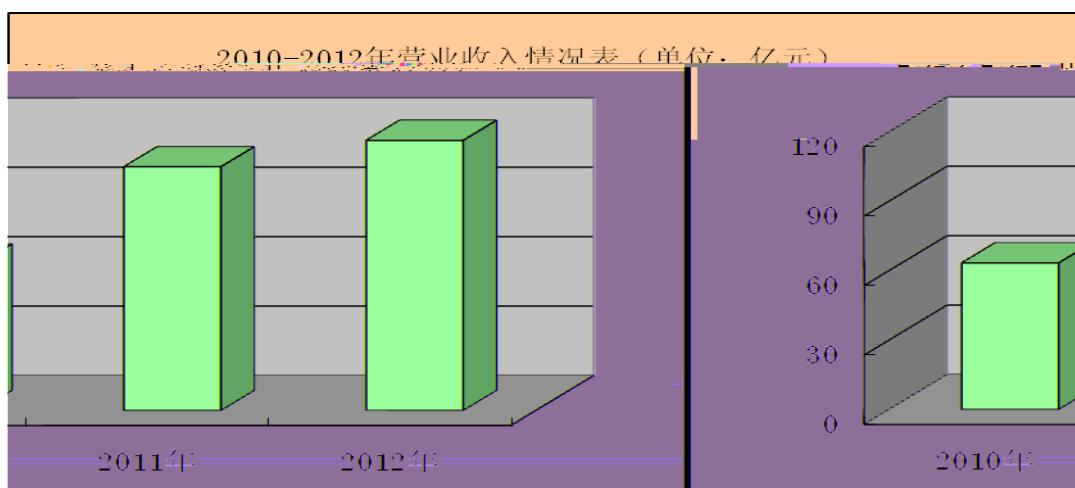
6.7%

20 80

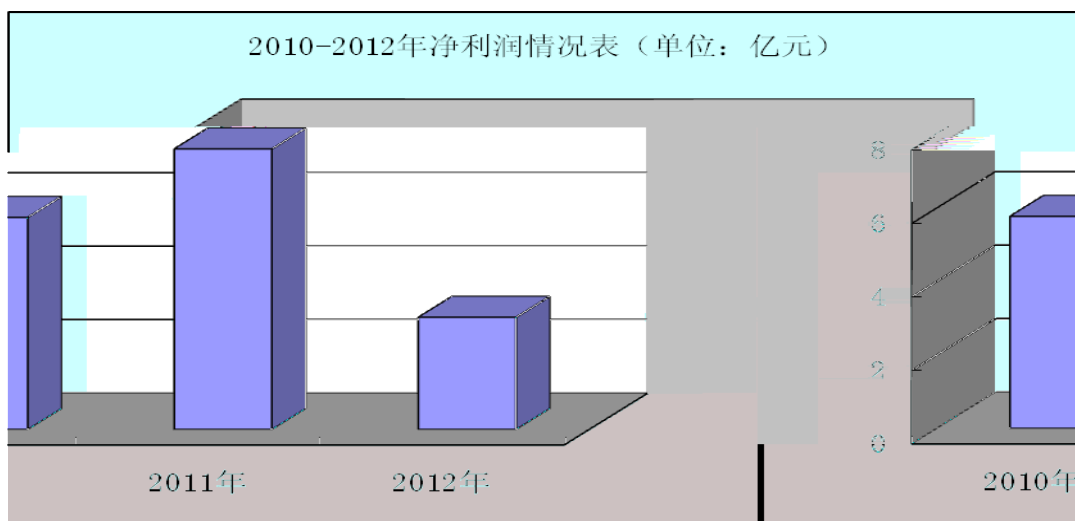


1

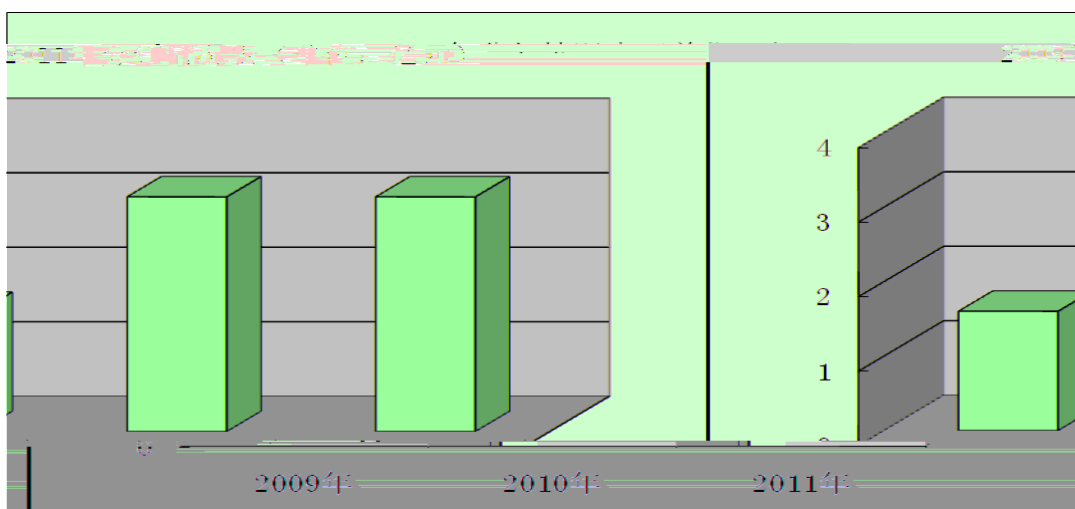
1



2



3



2

**3**

**4**

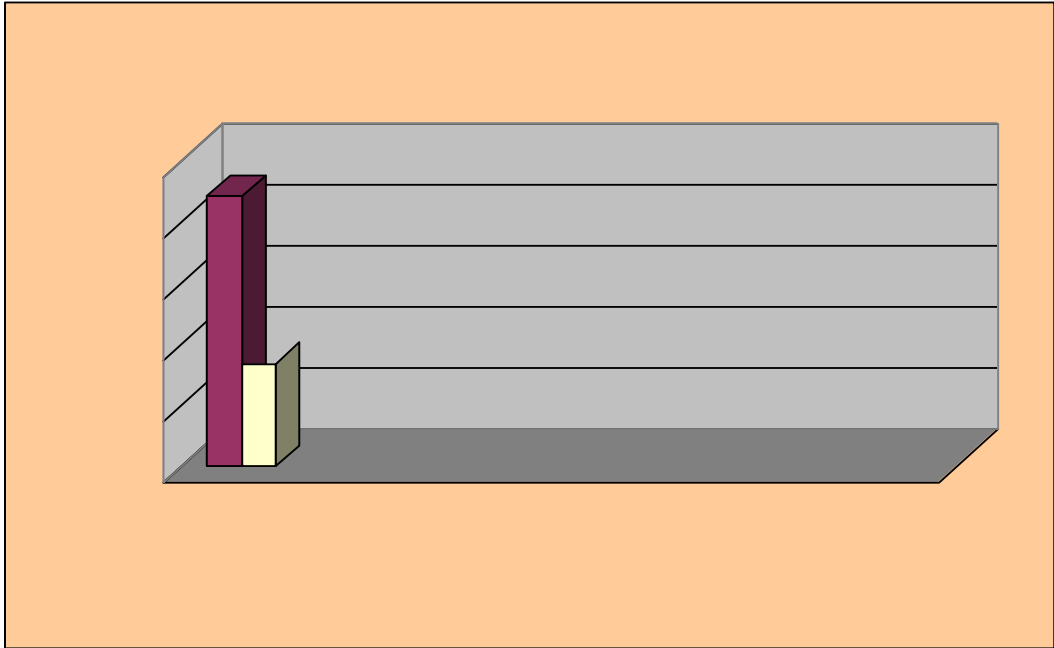
5

7

10

**1**

**2**



3

**4**  
2012

25

3000

52

•

•

2012

555

66.37

3045

111.56

2012

40.1

**5**

OA

2012 3 1

2012 4 17  
80

“ ”



2012 7 18-20

65

6

2012 3 9

2012 5 4 -6



5 28 -6 2

5

2 3 4 5 8



2012 8

2



2012 11 27 -29

27 54

1

2012

2012     1.6  
**2**

2012

[2012]1

10     20



2012

1327.2

**1**

201

60

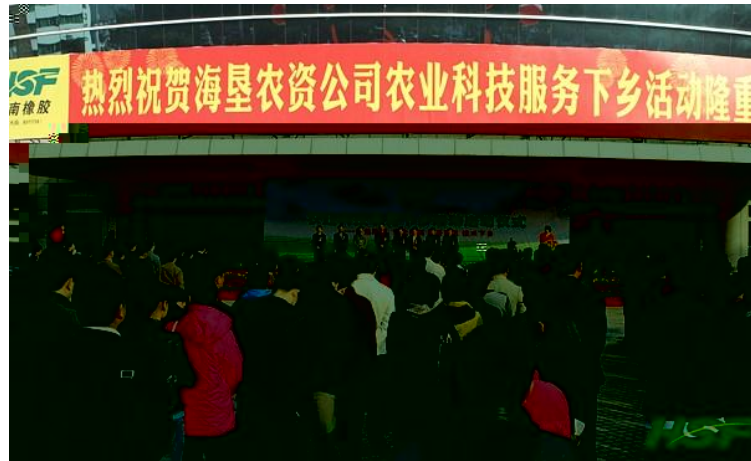
**3**

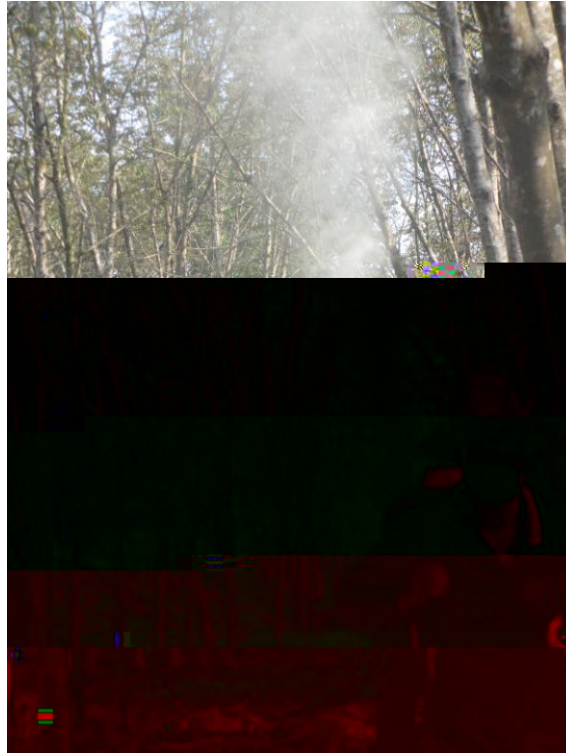
**4**

**1**

			2012	
	26		84	
<b>2</b>				
			2012	
			102,920	25,100
	6045	3,000	352.58	27.7
<b>3</b>				

			2012
			1305
140	133	31,627	
758	4		





4

2,000

5

2012

2012

97.67

102.31

2012

2013

**1**

2013

2012

**2**

2013

2012

**3**

**4**

**5**